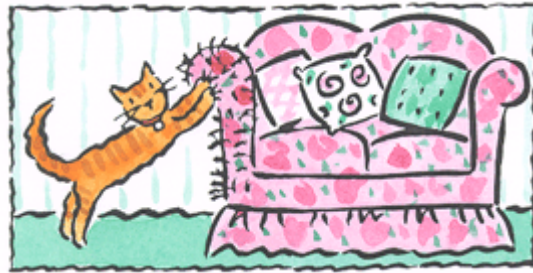




FELINE SCRATCHING

Cats scratch upright objects for claw maintenance by pulling off the exterior layer of nail, and also as a form of territorial marking. This type of marking behaviour provides both a visual and pheromone (scented) signal. Occasionally, scratching behaviour can be direct on horizontal surfaces. However, this normal behaviour becomes a problem for some owners when walls, furniture and carpets are destroyed.



When household scratching cannot be managed or resolved, it can be a major source of owner anxiety and one of the primary reasons for cats being relinquished to shelters and rehoming centres. Some cats that have been harshly punished by their owners only tend to scratch when the owner is absent.

The duration of the behaviour and the individual cats drive to scratch directly influence the outcome of any behaviour plan. Social stress and other emotional elements play a part in this behaviour as it is a form of communication. In its extreme form, scratching and spraying are seen in conjunction when there are severe social problems between multi-cat households.

If scratching and urine marking are exhibited concurrently, social interactions such as passive or active aggression between household cats or between household cats and outdoor cats is usually a probable cause.

If you have any questions regarding scratching behaviour and your cat, please do not hesitate to contact WELLBEHAVE.